

# Bower Grove Support

Support for the Wider Community 1992 - 2018  
For Families of Children with Special Needs



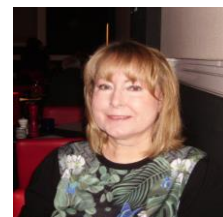
Bower Grove School Fant Lane Maidstone Kent ME16 8NL

## SUMMER 2018 Newsletter

**HI!** We look forward to seeing you this term at our meetings and presentations. If you are a new parent or carer, please join us and feel free to bring your family and friends with you.

**MEETINGS THIS TERM:** This term we are covering some key Behaviour linked subjects; please see below and further information over the page. I hope you will be able to join us. Remember meetings are open to any other school and there is no need to book.

**LAST TERM** we were joined by Teresa Hay, a representative from Information, Advice and Support Kent (IASK). Teresa talked about the IASK service for families of children and young people (0-25 Years) and provided information about options for post 16 transition. Please see more information over page and contact details etc.



Unfortunately, due to unforeseen circumstances arising at short notice, we had to cancel the talk about Gang and Knife culture planned for 9<sup>th</sup> March. I endeavoured to notify everyone as early as possible, my apologies if you didn't hear in time.

Please see the summer programme below:

*Josephine Cousins*

### PROGRAMME - OPEN TO ALL SCHOOLS

ALL MEETINGS ARE HELD AT BOWER GROVE SCHOOL FANT LANE MAIDSTONE ME16 8NL

**No need to book.**

Friday 27 <sup>th</sup> April  10.15am- 11.40am	<b>BEHAVIOUR INTERVENTIONS</b> <b>Matt Evans, Assistant Headteacher, Bower Grove School,</b> <b>will be joining us to talk about Behaviour Interventions.</b> <b>All are welcome to join us. (More information over/page)</b>
Friday 29 <sup>th</sup> June  10.15am- 11.40am	<b>A PARENT SURVIVAL GUIDE</b> <b>BEHAVIOUR MANAGEMENT</b> <b>Pam Stephens returns for a talk about Behaviour</b> <b>Management.</b> <b>All are welcome to join us. (More information over/page)</b>

**MEETING LAST TERM**  
**INFORMATION, ADVICE AND SUPPORT KENT (IASK)**  
**(0 – 25 years) special educational needs or disabilities.**

IASK support families of children and young people (0 – 25 years) with special educational needs or disabilities. They hope to empower children/young people and their parents to make informed choices about their children's education, other outcomes and communicate confidently.

As mentioned on the IASK flyer they provide a service at arm's length from the local authority and Clinical Commissioning Groups, offering an impartial service at all users by not favouring one side over another, treating all parties respectfully; and not having any rights or power over the outcome of any discussions or decisions.

For information and a copy of their flyer and information sheets on a variety of subjects please see contact details below:

Website: [www.kent.gov.uk/lask](http://www.kent.gov.uk/lask) Helpline: 03000 41 3000 Email: [iask@kent.gov.uk](mailto:iask@kent.gov.uk)

IASK can also be found on Facebook - IASK

**BOWER GROVE SUPPORT MEETINGS THIS TERM**  
**SUMMER 2018**

**As mentioned on the first page, during the summer we will be covering Behaviour linked talks for parents & carers and professionals are welcome to join us too.**

The first talk will take place on **Friday 27<sup>th</sup> April** when Matt Evans, Assistant Headteacher, joins us to talk about Behaviour Interventions. This will provide an oversight of how to de-escalate situations, dealing with anger and understanding how behaviour can stem from underlying needs i.e. can be linked to emotions and perceptions. The talk will provide some practical ideas and thought-provoking changes that may help you to understand the situation better and improve outcomes.

The second of our Behaviour linked talks takes place on **Friday 29<sup>th</sup> June** when Pam Stephens returns to talk about "Behaviour Management – A Parent Survival Guide" and opens with a picture of Nanny McPhee. It describes parenting as the toughest job in the world and tells parents to hang on to "Parent Power". There is special mention of Special Needs, ASD and ADHD.

**I hope to see you all during the summer, meetings are open to parents, carers and professionals; there is no need to book.**

**CONTACT:** Josephine Cousins

**Web:** [www.bower-grove.kent.sch.uk](http://www.bower-grove.kent.sch.uk) and select **Parent Support**

**Email:** [psg.bowergrove@btinternet.com](mailto:psg.bowergrove@btinternet.com)

**Address:** Bower Grove School, Fant Lane Maidstone Kent ME16 8NL

**Tel:** 01622 726773 (General school phone number)

